

The Duke WIN Leadership Council consists of alumnae leaders and donors who serve as WIN advocates and ambassadors. Council members work closely with the WIN Director and the wider alumnae network to increase the number of women shaping Duke's future through their philanthropic influence, strengthen the pipeline of women for service on Duke's volunteer leadership boards, and enhance the way Duke cultivates and engages women for volunteer and financial leadership at the highest levels.

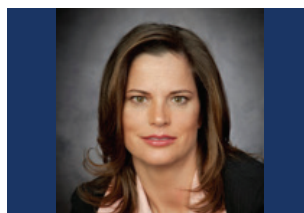


Isela Bahena M.B.A.'04

is a managing director in Nuveen's private infrastructure team with 19 years of experience in the financial services sector. She has spent her career underwriting debt and equity investments in an investment management role and currently leads a team which originates, structures, and invests in private equity and below investment-grade debt across the energy and infrastructure sectors, overseeing a \$2B portfolio. Isela has in-depth knowledge on various corporate governance matters and serves on several boards for investments in Europe and North America including transportation,

telecommunications and a Canadian energy platform. She is an advisory board and steering committee member for strategic midstream and transportation partnerships. Isela's previous experience includes investment and portfolio management in the private equity fund, co-investment, mezzanine and timber assets with a focus on emerging markets. She has also invested in domestic and international private placement debt. Before joining Nuveen in 2004, she was responsible for public finance and general middle-market lending and underwriting at Bank of America. Isela holds a bachelor of science in economics from the University of Illinois at Urbana-Champaign and a master's degree in business administration from The Fuqua School of

Business. She is bilingual in English and Spanish, plus conversational in Portuguese.



Alexis Coll-Very '92

is a litigation partner in Simpson Thacher's Palo Alto, California office, focusing on government and internal investigations, shareholder litigation and complex commercial disputes. She has been recognized by The Daily Journal, the Silicon Valley Business Journal and The Recorder as a leading woman lawyer in California and for being a sought-after litigator in the technology industry.

Alexis regularly advises both publicly and privately held companies that are confronted

with allegations of wrongdoing. She conducts internal investigations for management and boards of directors (including audit and other board committees), and represents these clients in any associated proceedings before federal, state and industry regulators. She also defends companies and individuals in shareholder litigation, including federal and state securities claims and derivative claims.

Alexis routinely handles civil rights lawsuits for various pro bono clients, at trial and on appeal, in the state and federal courts of California. She was honored by the ACLU of Southern California with the Reproductive Justice Award 2015 and by the California State Bar with its Pro Bono Award in 2016. Alexis serves as president of the board of directors of the Law Foundation of

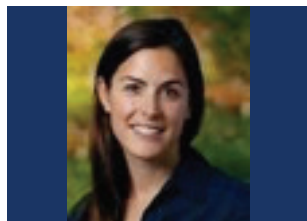
Silicon Valley and president of the board of the Giffords Law Center. She began practicing law in Simpson Thacher's New York office in 1995 and joined its Palo Alto office in 2000. She received her bachelor of arts, cum laude, from Duke University in 1992 with dual majors in political science and comparative area studies and her J.D. from the University of Virginia Law School in 1995.



Deb DeHaas '81 is the vice chairman and national managing partner of the Deloitte Center for Board Effectiveness. She is responsible for Deloitte's boardroom programs that support corporate boards and directors in fulfilling their governance-related responsibilities. She recently completed a six-year term as the chief inclusion officer for Deloitte, where she drove Deloitte's strategy to recruit, develop, and promote a diverse workforce and foster an inclusive environment where leaders thrive. She was named to Accounting Today's "Top 100 Most

Influential People" list in 2013 and 2014, and to the 2015, 2016 and 2017 NACD Directorship 100, which recognizes influential leaders in corporate governance.

Deb is a noted community leader, serving as trustee at Northwestern University, trustee at University of Denver, vice chair for United Way of Metropolitan Chicago and a director for World Business Chicago. Deb serves as a lead client service partner or advisory partner on a number of Deloitte's most significant clients. She also previously served the U.S. firms of Deloitte as a member of the board of directors, as their representative on the Deloitte Canada board of directors, as a member of the executive committee and the managing partner for the central region. She served on the Trinity College board of visitors from 2011-2019. She lives in Chicago.



Abby Field Gerry '02 and her family have always made environmental issues their priority. For the last 10

years Abby has served on the national council of the World Wildlife Fund. Abby is also on the board of the Bedford Historical Society and served on the Nicholas School of the Environment Board of Visitors and was chair of her class's 10th reunion.

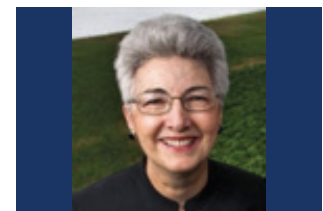


Caroline Gottschalk J.D.'90, P'19 is a partner at Simpson Thacher & Bartlett LLP in New York, where she specializes in mergers and acquisitions and private equity. She advises public and private companies, as well as private equity funds, in a wide range of matters, including acquisitions, divestitures and other strategic transactions, governance, and general corporate advice. Caroline is co-chair of the Women's Initiative at Simpson Thacher, which focuses on the promotion and retention of, as well as business and professional development efforts for, women.

Caroline was the recipient of the 2016 Forever Duke Award and received Duke Law's Young Alumni Award.

She is a senior member of the Law School board of visitors and is a former member of the Law Alumni Association board of directors. She was chair of her law school class's 25th reunion, was a founding member and serves on the advisory board of the Duke Law Club of New York and regularly participates as a panelist in Duke Business Law Society's annual ESQ Forum. Through her continuing involvement with the Law School, Caroline enjoys working with current students (particularly women) to provide guidance and career advice.

Caroline is co-chair of the Professional Development Committee of Women of Dartmouth New York and is a former member of the board of directors of New York City Outward Bound Schools. She received a bachelor's degree from Dartmouth College in 1984. She lives in New York and has two children.



Elizabeth Ann Harden M.D.'78 is a physician specializing in medical

oncology and hematology. During her service in the Air Force, Dr. Harden helped open the Department of Defense bone marrow transplant program at Wilford Hall. Following this, she was medical director of the bone marrow transplant unit at the University of Louisville. Since 1992 she has enjoyed a busy practice with Virginia Oncology Associates in Newport News, Virginia, where she lives with her husband Richard Hoefler, a surgical oncologist.



**Carolyn Ryan Healey
M.B.A.'91, P'16, P'20**

has been involved for more than 20 years in various community organizations in Montreal, Paris and Princeton, New Jersey. Currently, Carolyn serves as vice president and treasurer of the Princeton Public Library Foundation board and board member and committee chair for the Stony Brook Millstone Watershed Association. Previously, Carolyn was a founding member and past director of the Women in Leadership

Forum in Princeton, past vice president-elect of the McCarter Theater board of associates as well as a past board member of the Junior League of Greater Princeton and Stony Brook Garden Club. Carolyn has also been a volunteer and fundraising leader for various schools. Carolyn has a bachelor of arts in philosophy and a bachelor of science in computer science from Villanova University and an M.B.A. from The Fuqua School of Business, and has worked as a consultant to several industries over the years and currently manages a private foundation. Carolyn and her husband, John Healey M.B.A.'92, live in Princeton and have two daughters, Helen '20 and Julia '16.



Lora Berson Hersh '91, P'19, P'19 graduated from Duke with a bachelor's degree in art history. While at Duke, she began her career at the Discovery Channel in Bethesda, Maryland, as a summer intern. After graduation, she continued at Discovery

in ad sales marketing and promotion, through the network's acquisition of TLC and Animal Planet, eventually moving to New York before becoming an outside marketing consultant to Discovery Communications, Inc. Lora next became the director of image development and marketing for WonderCamp, Inc., a startup chain of children's entertainment centers in the New York metro area. After several years spent raising her children and working intermittently as an independent marketing consultant, Lora has recently returned to work as an account director at New Frontier, a digital marketing firm in Millburn, New Jersey.

Active in her community, Lora has served as the co-chair of the Annual Parents' Fund at Seton Hall Preparatory School where she also serves on the board of the Mothers Auxiliary, and is an active volunteer with the Griffin Bridges Program. She has co-chaired several fundraisers for the Visual Arts Center of New Jersey, and served on the board of directors of Millburn-Short Hills Youth Baseball.

For Duke, Lora has served for many years as an active member of the New Jersey Alumni Admissions Advisory Committees as well as the New Jersey Women's Forum. She has served as a member of the Duke Athletics Leadership group, and was a co-chair of her 25th reunion committee. She and her husband Jeff Hersh '88 live in Short Hills, New Jersey, and have four children, Zachary '19, Morgan '19, Casey, and Brandon.



Betsy DeHaas Holden '77, P'11, P'13 is a senior advisor to McKinsey & Company, working with clients across industries on strategy, marketing, innovation and board effectiveness initiatives. She has over 35 years of experience in consumer goods. Betsy was formerly co-CEO of Kraft Foods and CEO of Kraft Foods North America. In addition to her CEO role at Kraft, Betsy also held the positions of president, global marketing and category development; executive vice president of operations, R&D, IT; plus

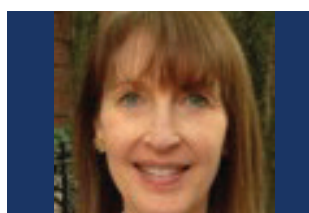
multiple division president and line management roles.

Betsy serves on the boards of Diageo PLC, Western Union, Time Inc., and the Kellogg School of Management Executive Committee and global advisory board. Betsy is also a senior fellow of the Kellogg Innovation Network, president of the board of the Off the Street Club and serves on the boards of the Chicago High School for the Arts and Ravinia Musical Festival.

Betsy graduated summa cum laude and Phi Beta Kappa with a bachelor of arts in education from Duke. She was a member of the Trinity College board of visitors from 2003-2011, serving as chair from 2009-2011. She received a master of arts in teaching from Northwestern University and a master of management from the Kellogg School of Management at Northwestern, where she was named valedictorian.

Betsy was elected to the Board of Trustees in 2011 and chaired the Next Generation Living and Learning Experience Strategic Task Force. She serves on the Professional Education and Research Committee. She previously served on the Institutional

Advancement Committee, Undergraduate Education Committee, and the Committee on Honorary Degrees. She is an inaugural member of the Duke WIN Leadership Council. Betsy and her husband, Arthur, have two children: Andrew '11 and Julie '13.



Barbara Janulis '83

graduated from Duke University magna cum laude with a bachelor of arts with honors in economics and was elected to Phi Beta Kappa. She went directly on to earn a master of management from Northwestern's J.L. Kellogg Graduate School of Management. After a career in mortgage securities sales at Goldman Sachs and Bear Stearns, she retired in 1993 to be a full time mother and volunteer.

Barbara has served for over a decade on the national board of directors of the Posse Foundation, a leading nationwide college access program which identifies, recruits and trains outstanding leaders from public high schools

— many of whom might have been overlooked by traditional college selection processes — and forms groups of multicultural, supportive "Posses" of ten who receive four-year, full-tuition leadership scholarships from Posse's partner colleges and universities. Barbara was also a co-chair of her Duke 30th reunion and currently serves on the DukeEngage National Advisory Board, and the DukeNY Women's Forum Executive Committee.

She and her husband, Ted, live in New York City and Litchfield, Connecticut and have three children, Peter, Helena and Christina.



**Mary Brantley Johnson
B.S.N.'09, M.S.N.'12,
D.N.P.'15**

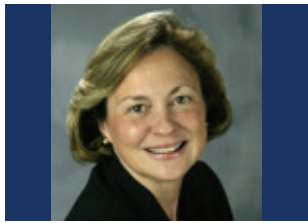
completed a bachelor of science degree in molecular biology at Meredith College, then she earned an accelerated bachelor of science degree in nursing, a master of science in nursing as a family nurse practitioner and a doctorate of nursing practice at Duke University. She returned to Meredith in 2015 after working for

several years as an urgent care provider. In April 2017, Dr. Johnson was awarded with the National Wellness Institute's Certified Wellness Practitioner designation, which symbolizes an individual's strong academic preparation, professional competency in wellness programming, and commitment to continuing education, scholarship and professional development.

Dr. Johnson serves on the National Consortium for Building Healthy Academic Communities, the North Carolina Immunization Coalition and the Beta Epsilon Chapter of Sigma Theta Tau International Honor Society. At Meredith, Dr. Johnson serves on the incident management team, wellness advisory committee, safety and health committee, and orientation committee, as an advisor for Peer Educators Advocating Responsible Lifestyles (PEARLS), and a preceptor for both UNC and Duke nursing students.

She enjoys traveling, autocrossing her MINI Cooper and attending Duke sporting events. Dr. Johnson lives in Cary with her husband, Brice Johnson B.S.E.'02, M.Eng.M.'03, and four children: Lewis (Great

Dane), Bailey (Beagle), and Gonzo (Maine Coon).



Susan Pendleton Jones M.Div.'83, P'09, P'12, P'16

retired as associate dean of United Methodist (UM) initiatives and ministerial formation at Duke Divinity School. She also has served as director of field education, the longest continuously running program of Duke University. Her teaching responsibilities at Duke have included courses on leadership, forgiveness and reconciliation, and the pastor's vocation, team-taught with her husband, L. Gregory Jones M.Div.'85, Ph.D.'88, current dean of Duke Divinity School. Additionally, Susan was the project coordinator for

the Divinity School's 2005 building addition, which includes Goodson Chapel and the Westbrook Building.

A retired elder in the Western North Carolina Conference of the United Methodist Church, Susan has served pastorates in North Carolina and Maryland and was former

UM campus minister at Duke. In retirement Susan serves as a consultant to the N.C. United Methodist bishop. Susan and Greg are the parents of Nathan '09, M.Div.'12; Benjamin '12; and Sarah '16 and the grandparents of Clara Susan, age 2, and Audrey Catherine, born in May 2019.



Heather McCaslin Kempczinski '91

graduated from Duke with a bachelor of science in biology. She earned an M.D. degree from the University of North Carolina at Chapel Hill in 1996 and completed her residency in pediatrics at Massachusetts General Hospital for Children (MGHC). After residency, she worked as an attending physician in the MGHC newborn nursery. Heather served on the Trinity College board of visitors from 2011-2017. She currently serves on the MGHC pediatric advisory board and Storybook Ball Committee. She also volunteers internationally with the Helping Babies Survive program. She resides in Chicago with her

husband, Chris '91, and their two children, Jack and Lily.



Dr. Rebecca Kirkland '64, M.D.'68 is a retired pediatric endocrinologist and professor emerita at Baylor College of Medicine. At Baylor, she served as chief of the academic general pediatric section in the department of pediatrics and senior associate dean of medical education.

Rebecca received a bachelor of arts degree in English and a medical degree from Duke and a master's degree from the University of Texas School of Public Health. An authority on growth problems in children, Dr. Kirkland has been an investigator for several studies regarding use of growth hormone in children. She has received numerous awards and recognition throughout her career, including the Distinguished Faculty Award from the Baylor Medical Alumni Association; the Arnold J. Rudolph Baylor Pediatric Award for Lifetime

Excellence in Teaching; and the B'nai B'rith Good Heart Humanitarian Award for community service.

A lifelong advocate for education and health, she was a founding member and past president of the Greater Houston Women's Foundation, which supports projects to encourage self-sufficiency of women and girls and teaches women about finances, budgeting and basic money matters. Rebecca was a member of the executive committee of the Medical Alumni Association of the Duke School of Medicine for seven years and received the Distinguished Service Award from the Duke Medical Alumni Association in 1992.

She was elected to the Duke University Board of Trustees in 1995 and served on the Duke University Health System Board of Directors. She chaired the board's patient safety and clinical quality committee for 10 years and established the Patient and Family Advisory Council on which she continues as an honorary member. Rebecca was awarded the University Medal for Distinguished and Meritorious Service at Duke in 2012.

She has served as

president of the Josiah Charles Trent Memorial Foundation, named for her father who served on Duke Medical School's faculty. Rebecca is a member of Duke's founding family. Her grandmother Mary Duke Biddle graduated from Trinity College, Duke's predecessor college in 1907. Her mother, Mary D.B.T. Semans '39, Hon.'83, and three sisters, Sally Trent Harris '63, Mary Trent Jones '63, and Beth Semans Hubbard '85 are also Duke alumnae. Rebecca lives in Fearington Village, Pittsboro, North Carolina, with her husband Dr. John Kirkland.



Stacy Klein-Gardner B.S.E.'91 is an adjunct professor of biomedical engineering at Vanderbilt University. Her research is in engineering education and she currently is working on the NSF-funded Engineering For Us All project. Stacy serves on Duke's Pratt School of Engineering board of visitors.

Stacy and her husband

Matthew Gardner have one child, Drew. Stacy received her undergraduate degree in biomedical and electrical engineering and subsequently earned a master's from Drexel and a Ph.D. from Vanderbilt.



Yibing Mao J.D.'89, P'11, P'21 is chief legal counsel, Asia-Pacific for Marriott International. With more than 20 years of Asia-Pacific hospitality industry experience, Yibing brings invaluable legal and business expertise to Marriott International's fastest growing region.

She leads a multinational legal team across Asia-Pacific that supports the development and operations of properties (including asset management, BMSC, HR and IT). Her team also has the responsibility of overseeing the implementation of legal compliance for the APAC continent. Prior to the merger with Starwood, she assumed the dual role of heading senior vice president of asset management.

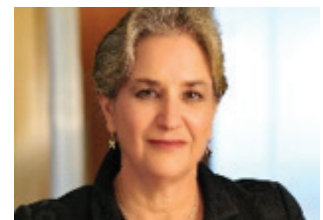
Before joining Marriott in 1996, Ms. Mao was an associate of the Hong Kong office of Milbank, Tweed, Hadley & McCloy, a New York based law firm. She is a graduate of Duke's School of Law and Beijing University. She has two sons, Alexander Wang '11 and Zachary Zhang '21 and lives in Hong Kong with her husband David Zhang.



Sharon Kerrie Marcil '88, P'23 earned her bachelor of arts in economics from Duke, magna cum laude, in 1988 and her M.B.A. with distinction from Harvard University Graduate School of Business Administration. Sharon is the leader of BCG's public sector practice in the Americas and is a member BCG's 15-person global executive committee. Prior to assuming her public sector practice position, Sharon led BCG's consumer and retail practice area.

Prior to joining BCG, she was at Goldman, Sachs & Company in their mergers and acquisitions department. Sharon

currently serves on Duke's Trinity College board of visitors and is chair of the WIN Leadership Council. She was co-chair for her 25th Duke Reunion and served on the Washington D.C. Women's Forum. She participates in local Washington activities including serving on the board of Women for Woman International, an organization dedicated to helping women survivors of war. Sharon and her husband, Thomas L. Monahan III, live in Chevy Chase, Maryland. They have two children, Elizabeth and Caroline.



Terri Mascherin '81, P'16 is a litigator with the Chicago firm Jenner & Block. She is a fellow of the prestigious American College of Trial Lawyers and is AV Peer Review Rated, Martindale-Hubbell's highest peer recognition for ethical standards and legal ability. In 2012, Law360 named her a "Top Female Trial Attorney," one of only 15 women nationally selected for the honor. In 2007, she was recognized

as one of the "50 Most Influential Women Lawyers in America" by The National Law Journal. A former president of the Chicago Bar Association, Terri has been nationally recognized for her legal work, including her pro bono representation of death row inmates and her work to promote effective representation of defendants in capital cases.

Terri is a co-chair of Jenner & Block's professional responsibility practice, and a member of the complex commercial litigation and international arbitration practices. She serves the firm as a member of the diversity and international committees and its women's forum steering committee, and is a past member of the firm's management committee. Terri serves as the vice president of the board of the Lawyers' Trust Fund of Illinois and is a member and past chair of the Northwestern University Pritzker School of Law board. At Duke, she was a member of the Duke University Marching Band, the Alpha Omicron Pi sorority and was secretary of the Associated Students of Duke University. She serves as a member of the board of the Duke Band Alumni Association,

and has co-chaired the fundraising committees for several of her Duke reunions. Terri and her husband Thomas Abendroth live in Evanston, Illinois, and have two daughters, Eliza and Kate '16.



Tamara McGlockton-Hill '86 graduated from Duke in 1986 with a bachelor's degree in philosophy. She was the fourth child in her family to enroll in and graduate from Duke in a ten year period (1976-1986). She is the CEO of Favored Foods, Inc., has been an active volunteer with the North Texas and Greater Chicago Food Banks, and is a mentor for Sacred Moments Women's Ministries. She developed, facilitated and served as keynote speaker for a Small Business Entrepreneurs in Food Industry workshop and has been a featured speaker at Women's Image/Empowerment Conference. Tamara was an active member of Duke's Council on Women's Studies and was appointed to its

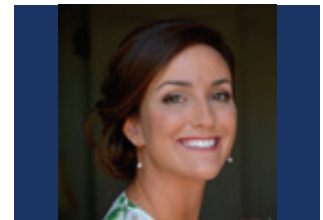
executive committee. She and her husband, Johnny Hill '85 live in Chapel Hill, North Carolina. They have two daughters, Alexis and Kaya.



Eileen Ergas Meidar '99 is currently completing graduate work at University College London where her research focuses on motherhood and contemporary parenting culture. Her work examines why elite-educated women have been "opting out" of the workforce at higher rates than women in other populations.

Prior to returning to academia, Eileen was a venture investor, philanthropist and fundraiser focused on social impact, health, and progressive political causes. Eileen has co-chaired the annual fund at the American School in London and serves as a class representative for annual giving at the Chapin School. She began her career in the impressionist and modern art department at Christie's. Eileen received a bachelor of arts in art

history and a certificate in Latin American studies at Duke. She lives in London with her husband, Liad Meidar, and three children.



Kristen Merlone '10 earned a bachelor of arts in political science with a concentration in American politics and was a member of Pi Beta Phi sorority and the women's lacrosse club. Kristen has been a volunteer assistant soccer coach and afterschool tutor with America SCORES, an organization which inspires urban youth to lead healthy lives, be engaged students, and have the confidence and character to make a difference in the world. Kristen previously interned with the Global Philanthropy Forum and continues to be a project based consultant at Merlone Geier Partners. More recently, Kristen has focused her attention on, and helped sponsor, the American Grand Strategy (AGS) program at Duke. The mission of AGS is to prepare the next generation of strategists by studying past generations and

interacting with current strategic leaders. AGS is a signature program for Duke students interested in national security policymaking. The program is defined by its curriculum, with the hallmark AGS advanced seminar, speaker series, co-curricular active learning experiences, research opportunities and extensive alumni network.



Catie Meyer '90 earned a bachelor's degree from Duke University in political science and art history and a J.D. from Georgetown University Law Center. Before retiring to raise her two children, she was a litigator specializing in white collar crime and securities litigation. She currently serves on the board of St. Stephen's & St. Agnes School and co-chaired the school's largest capital campaign. She is a member of the board of The Child and Family Network Center, which provides free preschool and family support services to the working poor, and also served on their capital campaign committee. Catie

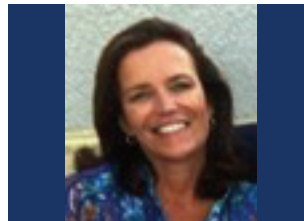
started a local boys youth lacrosse club, the Red Shirts. She served on the Duke Annual Fund Advisory Board (2012-2018) and co-chaired her 15th and 25th reunions. She lives in Alexandria, Virginia, with her daughter, son and two dogs.



Janis Rehlaender B.S.E.'77, P'07, P'10, P'12 is the retired director of corporate planning for Baxter International (1978-1987). A global healthcare company, Baxter International develops, manufactures and markets products that save and sustain the lives of people with hemophilia, immune disorders, infectious diseases, kidney disease, trauma, and other chronic and acute medical conditions. Janis also served for six years, three as chair, on the Darien Board of Education in Darien, Connecticut. She is a founding board member of the Given Limb Foundation.

Janis was a biomedical engineering major at Duke and earned an M.B.A. at

the University of Chicago. She serves on the Pratt Engineering board of visitors, and is an active Pratt class agent and ambassador. In 2011, she was awarded Pratt School of Engineering's Distinguished Service Award and, in 2009, the DAA's Charles A. Dukes Award. Janis and her husband Jim have three sons, James '07, Jason B.S.E.'10, and Jordan B.S.E.'12, M.B.A.'19.



Sarah Ryland '87, P'20, P'22 graduated with a bachelor of arts in political science. She worked in human resources and staffing at Tiffany & Co. in New York and Montgomery Securities in San Francisco, and as a technology recruiter at Oracle Corp. and Korn Ferry executive search. She was the founding member of the parent auxiliary for the Peninsula Bridge program, a nonprofit in Palo Alto to prepare highly motivated students from low income neighborhoods to prepare for high school and be on the college track. She

was also a member of the Edgewood Auxiliary in San Francisco which helps children at risk whom have suffered domestic abuse and mental health issues.

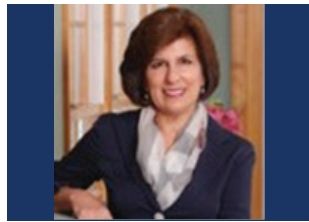
Sarah was very active in fundraising and volunteering roles in her children's elementary through high school communities. She was also a member of the Trinity College board of visitors from 2012 through 2018. She lives in Hillsborough, California, with her husband, Kyle Ryland '87, and their children, Connor '20 and Claire '22.



Tanya Smith '94, J.D.'98 graduated from Duke with a bachelor of arts in history and subsequently earned a J.D. in 1998. She began her career in the New York City office of Paul, Weiss, Rifkind, Wharton & Garrison where she specialized in securities, private equity and hedge funds. After several years in private practice, she joined John A. Levin & Company, a money manager, as assistant general counsel. After retiring from the legal

practice, she focused her efforts on volunteering with various community organizations, including New York City Ballet (business and professional committee), Planned Parenthood of Southern New England, Mount Sinai Children's Environmental Health Center, and Kids in Crisis, where she is currently a member of the board of directors and chair of its nominating committee. For Duke, Tanya worked as a phone-a-thon volunteer for the Annual Fund during her undergraduate years and has been a co-chair of her undergraduate and law school reunions every year since graduating. She is a founding member of the Duke Young Alumni Development Council and has served on the Law Alumni Association board of directors and the Annual Fund executive committee (now the Annual Fund Advisory Board). She currently serves on the Duke Law NY board and the Duke NY Women's Forum Executive Committee.

She lives in Greenwich, Connecticut with her husband Geoff Smith '94 and their daughter Madeline.



Laurene Meir Sperling '78, P'13, P'14 is

president of the Sperling Family Charitable Foundation where she directs its strategic philanthropy in several program areas including education, child and youth development, health care and poverty alleviation. Her prior professional experience centered in investment banking and venture capital at Paine Webber, Inc. and Cowen and Co., and in accounting for Ernst and Young. She has more than 30 years of experience with capital aggregation for corporate and nonprofit organizations seeking positive growth and impact. Laurene graduated from Duke with a degree in management science and accounting and went on to the Harvard Business School to receive her M.B.A. in 1982.

Laurene is chair of the Bell Foundation, a national leader in after-school and summer programs for children at risk. In addition, she serves on the board of dean's advisors for

Harvard Business School, the dean's advisory board for Harvard's Graduate School of Education, the Dana Farber Cancer Institute Women's Cancers Visiting Committee, the Brigham and Women's Hospital Women's Health Leadership Council, the board of Combined Jewish Philanthropies, where she co-chairs the task force on measurement, and the board of Temple Shir Tikva where, she is a co-chair of development. A member of the Duke University Library advisory board from 1997 until 2010, she served as chair from 2006 through 2010.

Elected to the Board of Trustees in 2010, Laurene currently serves as vice chair of the board, vice chair of the Executive Committee, and serves as a member of the Committee on Honorary Degrees. She is an inaugural member of the Duke WIN Leadership Council.

She and her husband live in Wayland, Massachusetts, and have four children.



Danielle Squires '02 is managing director, interest rate risk management, for Wells Fargo Bank. She joined Wells Fargo in 1999 as part of First Union's leveraged finance group, foreign exchange derivatives and global financial institutions. For the past 10 years, Ms. Squires has been structuring and marketing interest rate hedging solutions to corporate, commercial, brokerage, real estate and wealth management clients across the United States. She was the youngest person promoted to managing director at Wells Fargo Securities. In addition to her coverage responsibilities, she sits on the board of the Johnston YMCA in Charlotte, North Carolina, as well as the Wells Fargo Securities Development and Engagement Council.

At Duke, Danielle was president of the Alpha Phi Omega community service fraternity serving both the Duke and Durham committee. Continuing her love of supporting

the development of girls, she restarted the Girl Scout troop at E.K. Powe Elementary School and served as troop leader for years. Additionally, Danielle led a student group in Asian and African literature and languages in a cross-border project to Beirut, Lebanon creating learnings and dialogue between Duke and Beirut Arab University. After graduating, Danielle served on the Annual Fund Executive Council for seven years, co-chaired her 10th reunion and was a member of the committee for the commemoration of the 50th anniversary of the matriculation of African American students at Duke. After the 50th anniversary committee, Danielle served on the president's appointed Duke Proceed Committee to continue alumni connections with and the development of all those who celebrated the anniversary. She is past president of Duke Black Alumni (DBA).

Danielle holds bachelor of arts degrees from Duke in comparative area studies and in Italian, and earned a concentration in economics. While at Duke, she worked as a phone-a-thon caller for the Annual Fund. She and her husband, Stephen Silvera, live in

Charlotte, North Carolina and have twin daughters, Cameron and Charlotte.



Alison Malin Zoellner '87 is the vice president and general counsel of the advanced materials business of Honeywell International Inc., an approximately \$2.6 billion global business which manufactures a wide variety of high-performance products, including environmentally preferable refrigerants and materials used to manufacture end products such as bullet-resistant armor, nylon, computer chips and pharmaceutical packaging. Prior to this role, she was the assistant general counsel, securities and finance, of Honeywell, acting as the company's lead SEC disclosure and finance lawyer. Alison was a 2016 fellow of the Leadership Council on Legal Diversity. Alison previously served as the vice president and general counsel of The New York Times Company, where she was the principal transactional lawyer as well as SEC disclosure counsel.

She was also an associate at Sullivan & Cromwell. She graduated with honors from the University of Texas School of Law in 1990 and is a member of the New York steering committee for the law school.

Alison has remained engaged with Duke since graduation in fundraising and reunion leadership activities, most recently co-chairing her 30th reunion. Alison's other volunteer leadership roles have included trustee of the Pingry School (Basking Ridge, New Jersey) where she was on the executive committee and chaired the committee on trustees, member of the Taft Parents Committee, board member of the Connection for Women and Families (Summit, New Jersey), board member of the Reeves-Reed Arboretum (Summit, New Jersey), and rector search committee member for Calvary Episcopal Church (Summit, New Jersey).

Alison is married to Scott Zoellner and lives in Summit, New Jersey, and Nantucket, Massachusetts. They have two sons, Teddy and Jamie.