

DukeWIN 2023-24 WIN Leadership Council

The Duke WIN Leadership Council consists of alumnae leaders and donors who serve as WIN advocates and ambassadors. Council members work closely with the WIN Director and the wider alumnae network to increase the number of women shaping Duke's future through their philanthropic influence, strengthen the pipeline of women for service on Duke's volunteer leadership boards, and enhance the way Duke cultivates and engages women for volunteer and financial leadership at the highest levels.



Maryann Esernio Bruce '82, P'13 is an accomplished board member and former Fortune 100 division president and CEO with the expertise to identify and develop strategies that accelerate growth, maximize profits, and improve stakeholder value. She has over 30 years of experience in the financial services industry. Maryann has functional expertise in sales and distribution, strategic planning, marketing and brand management, product development, client service, risk management, and regulatory oversight.

Maryann is an independent director of Amalgamated Bank, serving as the chair of the Enterprise Risk Oversight Committee and a member of the Executive & Corporate Social Responsibility and Audit committees. She is also a director at NextPoint, serving as chair of the Nominating & Governance Committee and as a member of the Executive, Audit and Compensation committees. In recognition of her leadership and expertise, Maryann was honored by Directors & Boards magazine as one of 20 accomplished female board members in Directors to Watch 2017: Governance Insights and Ideas from Top Women Directors. US Banker magazine also named Maryann one of The 25 Most Powerful Women in Banking for her business vision, personal excellence, and professional integrity.

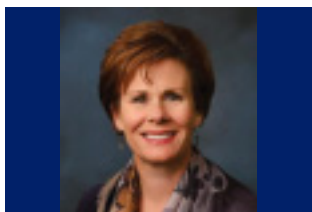
Maryann is passionate about cultivating women leaders and helping them succeed in their careers and lives. She chairs the board of C200, a global invitation-only professional peer community of C-Suite corporate executives and trailblazing entrepreneurs focused on inspiring, educating, supporting, and advancing current and future women entrepreneurs and corporate, profit center leaders. Maryann also chairs the board of Wrestle Like A Girl, a nonprofit dedicated to using the sport of wrestling to empower girls and women to become leaders in life. She is an advisory board member of Divershefy, a private company that brings women into C-suites and boardrooms globally, and the International Women's Forum, an association that advances women's leadership and champions equality worldwide. Maryann is also a founding member of Paradigm for Parity, a coalition of business leaders, board members, and academics committed to addressing the corporate leadership gap to achieve full gender parity by 2030. And she is a member of WCD, an organization focused on increasing women's representation and influence in corporate boardrooms worldwide and inspiring diverse and visionary boards.



Tiffany A. Burnette M.B.A. '95, P'25 graduated from Duke's Fuqua School of Business and went to work for Citicorp Securities in Debt Capital Markets and Ernst & Young in Special Projects-Internal Strategy. In 2000, she relocated to London and continued to work for Ernst & Young before having two children, Andrew and Chloe. In London, Tiffany became involved with the Institute of Cancer Research where she served on a steering committee responsible for creating fundraising events in support of the institute.

After moving to Greenwich, Connecticut, in 2007, Tiffany served on the board of directors of the Institute of Cancer Research Global Foundation. Tiffany has been an active volunteer in the Greenwich community, winning the Spirit of Greenwich Award in 2014. She has also been on the boards of Reach Prep, the Greenwich Historical Society, and the Bruce Museum. While on the museum board from 2010-2016, she served as executive committee vice chair, exhibitions committee chair, special events committee task force member, ICON Awards in the Arts committee member, development committee member, and as the strategic planning team's finance & development committee chair. In 2019, she earned a master's degree in museum studies from Harvard University.

Tiffany and her husband, **Don Casturo M.B.A. '95, P'25** are very excited that their son, Andrew, is a member of the Class of 2025.



Sara Ayres Craig '94, P'25 graduated from Duke with an A.B. in history and then earned an M.S. in Management from Purdue University in 1996. After graduation, Sara joined her family's auto dealership in Fort Wayne, Indiana, and completed NADA Academy, a year-long program that teaches dealership management. Today, Sara owns and operates Don Ayres Honda and Don Ayres Acura and has 160 employees.

During her career in her hometown, she has volunteered and held leadership positions in various organizations, including the Jorgensen YMCA, Leadership Forum, the Fort Wayne-Allen County Economic Development Alliance, Fort Wayne New Car Dealers Association, and the Northeast Indiana Regional Partnership. In 2004, Sara made the inaugural list of the Fort Wayne Business Journal's Future 40. She was named a Northeast Indiana Influential Woman in 2020. She is a member of the Board of Trustees of Canterbury School and sits on the Finance Committee there. Recently, she co-chaired the school's five-year strategic plan. She currently serves as an alumni representative on the Duke Lutherans Committee.

Sara enjoys lake and beach time with family and loves cheering on the Blue Devils in Cameron Indoor Stadium. A mother of four teenagers, she can often be found in the bleachers or sitting in an auditorium watching them play and perform. She lives in Fort Wayne with her husband, Mike Craig, and children, **Kristina Urberg '25**, Elizabeth Craig, Christian Urberg, and Alana Craig.



Shelley Lambert Carter '00 graduated from Duke magna cum laude with a major in public policy studies and then earned a J.D. from Georgetown University School of Law in 2003. After representing clients in the areas of employment and commercial law, Shelley served as a permanent law clerk for Judge Terence C. Kern in the United States District Court for the Northern District of Oklahoma. While in this role, Shelley was also active in various community endeavors, volunteering as a Big Sister through the Big Brothers Big Sisters program, tutoring elementary students in conjunction with Reading Partners, and serving on the board of trustees for Gilcrease Museum and Holland Hall Preparatory School. In 2012, Shelley became the Executive Director of the Judith and Jean Pape Adams Charitable Foundation, a nonprofit foundation based in Tulsa, Oklahoma. In this position, Shelley leads the foundation to maximize the impact of grantmaking in the areas of social services, education, arts and humanities, and medical research.

Shelley and her husband **Cason '00** currently live in Hinsdale, Illinois, with their three boys, Luke, Henry, and Jake, and their dog, Duke. They serve as a host family for Safe Families for Children of Greater Chicago, cheer for the Cubs almost as fervently as the Blue Devils, and spend most of their spare time driving their boys to sports games and cheering them on from the sidelines.



Shari Eberts '90 is a hearing health advocate and internationally recognized author and speaker on hearing loss issues. She is the founder of [LivingWithHearingLoss.com](https://livingwithhearingloss.com), a popular blog and online community for people living with hearing loss and tinnitus and executive producer of "[We Hear You](#)," a groundbreaking one-hour documentary about the hearing loss experience. Her first book, [Hear & Beyond: Live Skillfully With Hearing Loss](#), was published in May 2022.

Shari has adult-onset genetic hearing loss and serves on the board of directors of [Hearing Loss Association of America](#). Prior to her advocacy work, Shari had a 20-year career in finance. Shari holds a B.S. in Psychology summa cum laude from Duke University and an M.B.A. from Harvard Business School. Shari served on the Duke Trinity Board of Visitors from 2013-2019. She lives in New York City with her husband and children.



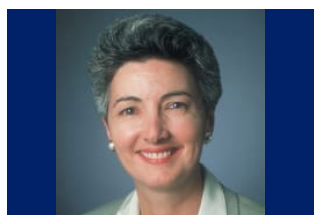
Dorlisa King Flur '87, M.B.A. '88 is an independent board member and corporate adviser to consumer/retail companies. Her prior professional experience divided equally between consulting at McKinsey & Company, where she was a partner in Atlanta and later co-led its Charlotte office, and C-level operating roles in three multibillion-dollar retailers. Notable roles included Chief Merchant and Vice Chair & CAO (Family Dollar), EVP-Omnichannel (Belk), and Chief Strategy & Transformation Officer (Southeastern Grocers).

She currently serves on the boards of two publicly traded retailers: Hibbett Sports, an athletically inspired fashion retailer, and Sally Beauty Holdings, an international

specialty retailer and distributor of professional beauty supplies. She also serves as an independent board member for privately owned United States Cold Storage, a refrigerated warehousing and logistics provider, and as senior advisor to Southeastern Grocers.

Dorlisa is an arts enthusiast and active civic leader in Charlotte, where she has chaired Blumenthal Performing Arts and the Bechtler Museum of Modern Art boards. She is chair of the NACD (National Association of Corporate Directors) Carolinas Board and past chair of advisors at UNC-Charlotte's Belk College of Business.

Dorlisa graduated summa cum laude and Phi Beta Kappa in a combined five-year program, earning her B.S. in computer science and economics from Duke and M.B.A. from The Fuqua School of Business. She and her husband, **Peter Flur B.S.E.'86**, have engaged with Duke through their Deux Flur scholarship and the Iron Dukes. They live in Charlotte, and their daughter is a recent graduate of Northwestern University.



Elizabeth "Betsy" Harden, M.D. '78 HS'81-'84 is a Hematology-Medical Oncology physician. A graduate of Duke Medical School in 1978 she performed residency in internal medicine at University of Texas, Southwestern in Dallas followed by fellowship in hematology-oncology at Duke. After training, Dr. Harden entered the Air Force and help start the Department of Defense bone marrow transplant program at Wilford Hall USAF Medical Center. Following military service she continued her interest in transplantation at the University of Louisville as assistant professor of medicine and director of their bone marrow transplant unit. In 1991 Dr. Harden joined Virginia Oncology Associates in Newport News Virginia where she practiced hematology oncology until her retirement in 2018. Betsy served on the board of the Mariners' Museum as well as Virginia Health Services Board in Newport News Virginia. She and her husband were instrumental in developing the Sentara Dorothy G. Hoefer Comprehensive Breast Center in Newport News named for her mother-in-law.

Dr. Harden now lives in Charleston with her husband Dr. Richard Hoefer, a retired surgical oncologist. They are active with the Preservation Society and the Gibbes Museum and enjoy traveling, boating, and exploring Charleston.

Betsy's ties to Duke remain strong, and she currently serves on the Duke WIN Leadership Council and the Medical Alumni Committee. She and her husband are financial supporters of the School of Medicine and Duke Cancer Institute.



Anne Harper J.D. '91, LL.M. '91, P'25 is a producer of State of the Bay, a live radio program on NPR-affiliate KALW in San Francisco (91.7 FM). Prior to producing public radio, she practiced law for many years, most recently as a litigator with the nonprofit environmental law firm Earthjustice, where she specialized in the enforcement of the Clean Air Act.

Anne currently serves on the Alumnae Leadership Council of Duke University School of Law, the board of trustees of The Bay School of San Francisco, and the board of directors of the League to Save Lake Tahoe (aka Keep Tahoe Blue). She has also served as a mentor for former Vice President Al Gore's Climate Reality Leadership Corps and on the Children's Health Council for UCSF Benioff Children's Hospital.

Anne has a B.A. in international relations from Colgate University, a J.D. and LL.M.

in comparative and international law from Duke University, and a master's degree in nonprofit administration from the University of San Francisco. She lives in Mill Valley, California, with her husband, Rick Ronald, and their three children.



Stephanie Hawley Henry '96 graduated from Duke with a B.A. in political science and art history. After graduation Stephanie built a career in educational fundraising working in development for Duke, the University of Chicago, and Northwestern University, in addition to the Madeira School in McLean, Va. While working in the Duke Annual Fund, Stephanie developed and launched the first Young Alumni Development Councils and directed the Duke Parents' Program. At Northwestern, she served as senior strategist for principal gifts, and senior director of annual giving and donor relations.

Stephanie is an active community volunteer. She is a member of the board of trustees of North Shore Country Day School and chairs its development committee. She was a member of the Vail Mountain School advancement and endowment committees, and co-chaired the VMS Gala. She also serves on the Woman's Board of Rush University Medical Center. Stephanie was on the Duke Annual Fund Advisory Board from 2016-22 and co-chaired the Class of 1996's 10th, 15th, 20th, and 25th Reunions.

Stephanie and her husband, **Jake Henry B.S.E.'96, Ph.D.'99**, live in Winnetka, Ill., and Vail, Colo., with their three girls, Kate, Isabelle, and Georgie, and their Bernese mountain dogs. In her spare time, Stephanie is an avid skier, open-water swimmer, and pickleball player.



Julie Biederman Hession graduated from Duke's Fuqua School of Business in 2002. She is currently a cookbook author, food photographer, and private caterer, with three published cookbooks: *Beautiful Bundts*, *100 Best Decorated Cookies*, and *175 Best Mini Pie Recipes*. Prior to writing cookbooks, Julie opened and ran Julie Anne's, a bakery, café, and specialty foods store located in Las Vegas, Nevada, which was inspired by Durham's own Foster's Market and her mentor, Sara Foster. The store sold Julie Anne's Granola line, an immediate hit with customers, which eventually grew

to nationwide distribution in stores such as Whole Foods, Fresh Market, and Central Market and was featured in Oprah and Better Homes and Gardens magazines.

In 2009, Julie took up the hobby of competitive cooking, and has since won dozens of national cooking competitions, including Aetna's "Healthy Food Fight," Chevron's

"Game Day Chef Cook-off," and Food Network's "Ultimate Recipe Showdown," hosted by Guy Fieri. Julie serves on the committee of the Discovery Children's Museum, which is dedicated to the educational enrichment of children through hands-on, interactive learning. She is actively involved in their annual Royal Tea Fundraiser, which helps to provide all-inclusive access programs to the museum for area children. Julie lives in Las Vegas with her husband, **Eric M.B.A. '01**, her daughter Gigi, and their two rescue dogs, Emma and Scout.



Keisha Edwards Hunt '97 is the president and CEO of Metas Solutions LLC. Metas is an 8(a) certified, woman-owned small business with headquarters in Atlanta. Metas provides consulting and advisory services to the federal government, primarily the Centers for Disease Control and Prevention.

Prior to founding the company, Keisha spent over a decade in public-sector consulting with Booz Allen Hamilton and PricewaterhouseCoopers Public Sector (now Guidehouse). She spent her career directing, evaluating, and administering large-scale and innovative community-based programs to strengthen organizations' ability to advance disease prevention. Keisha has helped establish public/private relationships, built community-based volunteer and advocacy networks, and created integrated communication and engagement strategies to strengthen public health approaches, specifically with the federal government.

She holds a B.A. in English from Duke, an M.P.H. in behavioral sciences and health education from the Rollins School of Public Health at Emory University, and is a PMI certified Project Management Professional. She is on the Duke Atlanta Regional Board, the planning committee for the Black Alumni Collective, and is a 2020 Emory University Ambassador. Keisha is a longtime volunteer, donor, former board member, and event chairperson for Atlanta-based nonprofit Kate's Club, which provides grief support for children and teens after the death of a loved one. She currently supports the Kate's Club Capital Campaign and the Emory 2036 Bicentennial Giving Campaign for the Rollins School of Public Health.

In her free time, Keisha enjoys yoga, traveling, cinema/movies, and spending time with her family – husband Eric, son Cole, stepson Ethan, stepdaughter Elise, and two zany cats, Wolverine and Sabretooth.



Anjali Kataria '93, P'26 is a serial entrepreneur and executive with two decades of healthcare and enterprise software experience in both the public and private sectors. Mytonomy, an industry cloud solution, is Anjali's third venture-backed company. As CEO and Co-Founder of Mytonomy, Anjali leads a fast-growing enterprise software company that is reshaping the future of patient engagement so that patients can lead healthier, happier lives.

Under her leadership, the company has been named to the Inc. 5000 list of fastest growing companies in the US in 2020 and 2021. Mytonomy's Cloud for Healthcare has been named best-in-class for enterprise content management and digital curation solutions, and the Mytonomy Film Studio she founded in 2018, dedicated to producing broadcast-quality patient education, has received 60+ Digital Health and Telly Awards. Today, Mytonomy has the largest healthcare microlearning library in the industry, consisting of more than 2,000 titles (and counting).

Prior to Mytonomy, Anjali's second venture-backed enterprise software company was acquired by Oracle and where she later served as VP of Product Strategy. Anjali's Federal Government experience started with the Obama Administration when she was one of the first Entrepreneurs in Residence at the FDA. She also served as Senior Technology Advisor in the Office of the CIO to the President at the EOP. During this time, Anjali drove multiple groundbreaking transformations including co-leading the innovation pathway, a new high-speed review process for highly innovative medical devices that could have substantial public impact.

Anjali is a former Springboard Fellow and Echoing Green Fellow and has received numerous awards including Top 40 Under 40 in DC, the FDA Commissioner's Award for Innovation, Top 100 Life Sciences Visionaries, and Silicon Valley's FWEE Trailblazer Award. Anjali received her AB in Public Policy from Duke University as a Benjamin N. Duke merit scholar and her MPP from Harvard Kennedy School. She has guest lectured at Wharton and the University of Maryland Smith School of Business. She enjoys spending time with her family, hiking, reading, musical theater, and screenwriting.



Dr. Jennifer Kherani M.D. '08 received her B.A. in Neuroscience in 2000 from Colgate University, completed her pre-medical post-baccalaureate studies at Columbia University in 2004, and earned her M.D. from Duke University in 2008.

She subsequently completed her residency training in emergency medicine in the combined Cornell/Columbia program at New York-Presbyterian Hospital, where she served as administrative chief resident in her final year.

She currently serves as head of clinical safety at Loxo Oncology, a wholly-owned subsidiary of Eli Lilly and Company. She also serves as medical monitor lead for

the Loxo Oncology at Lilly Phase III clinical trial evaluating the safety and efficacy of pirtobrutinib (LOXO-305) compared to investigator's choice covalent BTK inhibitor in patients with relapsed or refractory mantle cell lymphoma (MCL). Jen is a founder of Summus Global, a healthcare advisory company. Previously, she served on the faculty of Weill Cornell Medical School as an attending physician at New York- Presbyterian Hospital and is board certified in emergency medicine. She and her husband **Aftab Kherani '95, M.D. '99** live in Rye, New York, and have two sons.



Dr. Rebecca Kirkland '64, M.D.'68 is a retired pediatric endocrinologist and professor emerita at Baylor College of Medicine. At Baylor, she served as chief of the academic general pediatric section in the department of pediatrics and senior associate dean of medical education.

Rebecca received a bachelor of arts degree in English and a medical degree from Duke and a master's degree from the University of Texas School of Public Health. An authority on growth problems in children, Dr. Kirkland has been an investigator for several studies regarding the use of growth hormone in children. She has received numerous awards and recognition throughout her career, including the Distinguished Faculty Award from the Baylor Medical Alumni Association; the Arnold J. Rudolph Baylor Pediatric Award for Lifetime Excellence in Teaching; and the B'nai B'rith Good Heart Humanitarian Award for community service.

A lifelong advocate for education and health, she was a founding member and past president of the Greater Houston Women's Foundation, which supports projects to encourage self-sufficiency of women and girls and teaches women about finances, budgeting and basic money matters. Rebecca was a member of the executive committee of the Medical Alumni Association of the Duke School of Medicine for seven years and received the Distinguished Service Award from the Duke Medical Alumni Association in 1992.

She was elected to the Duke University Board of Trustees in 1995 and served on the Duke University Health System Board of Directors. She chaired the board's patient safety and clinical quality committee for 10 years and established the Patient and Family Advisory Council on which she continues as an honorary member. Rebecca was awarded the University Medal for Distinguished and Meritorious Service at Duke in 2012.

She has served as president of the Josiah Charles Trent Memorial Foundation, named for her father who served on Duke Medical School's faculty. Rebecca is a member of Duke's founding family. Her grandmother Mary Duke Biddle graduated from Trinity College, Duke's predecessor college in 1907. Her mother, **Mary D.B.T. Semans '39**, Hon.'83, and three sisters, **Sally Trent Harris '63**, **Mary Trent Jones '63**, and **Beth Semans Hubbard '85** are also Duke alumnae. Rebecca lives in Fearington Village, Pittsboro, North Carolina, with her husband Dr. John Kirkland.



Jill Levenson '87, P'19, P'22 graduated from Duke with a Bachelor of Arts degree in public policy and received a J.D. from Emory University School of Law. Jill worked in the Atlanta office of the U.S. Securities and Exchange Commission, and during that time she was designated a special assistant United States attorney. Subsequently, she worked for a small boutique law firm focusing on complex civil litigation. Jill has been an active member of the Duke community serving on several committees, including co-chair of her 30th reunion. Currently, she is co-chair of the Duke Atlanta Women's Forum. In addition, Jill is involved in a variety of philanthropic efforts and educational institutions in Atlanta. Jill and her husband, Jeff, have two children **Matthew '19** and **Caroline '22**.



Kristin Bishop MacDermott '90, P'20, P'24 is a licensed marriage and family therapist with more than a decade of research in resilience. The resilience training curriculum she developed has been validated in four studies with researchers from the Duke Clinical Research Institute, published in peer-reviewed journals, and used by a diverse array of organizations, including Navy SEALs, the LAPD, 20 hospitals across the country, including Duke Health and the National Institutes of Health, the National Guard, the Veterans Administration, nonprofits that support at-risk youth, and schools.

Kristin is presently focused on addressing the mental health crisis our children and young adults are facing by bringing evidence-based resilience training to schools, athletic clubs, camps, and other organizations that want to improve the lives of our young people.

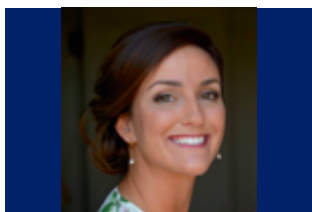
Kristin is the author of three books: "It Takes Two Minutes to Shift Your Mindset and Build Resilience," which breaks resilience down into bite-sized skills anyone can apply to their life immediately; "Resilience: Why Some People Have It, Others Don't, and 47 Skills to Get It"; and "Resilient Family Capital: The 15 Strategies Every Family of Wealth Needs."



Eileen Ergas Meidar '99, P'27 is currently completing graduate work at University College London where her research focuses on motherhood and contemporary parenting culture. Her work examines why elite-educated women have been "opting out" of the workforce at higher rates than women in other populations.

Prior to returning to academia, Eileen was a venture investor, philanthropist and fundraiser focused on social impact, health, and progressive political causes.

Eileen has co-chaired the annual fund at the American School in London and serves as a class representative for annual giving at the Chapin School. She began her career in the impressionist and modern art department at Christie's. Eileen received a bachelor of arts in art history and a certificate in Latin American studies at Duke. She lives in London with her husband, Liad Meidar, and three children.



Kristen Merlone '10 is earned a bachelor of arts in political science with a concentration in American politics and was a member of Pi Beta Phi sorority and the women's lacrosse club. Kristen has been a volunteer assistant soccer coach and afterschool tutor with America SCORES, an organization that inspires urban youth to lead healthy lives, be engaged students, and have the confidence and character to make a difference in the world. Kristen previously interned with the Global Philanthropy Forum and continues to be a project-based consultant at Merlone Geier Partners. More recently, Kristen has focused her attention on, and helped sponsor, the American Grand Strategy (AGS) program at Duke. The mission of AGS is to prepare the next generation of strategists by studying past generations and interacting with current strategic leaders. AGS is a signature program for Duke students interested in national security policymaking. The program is defined by its curriculum, with the hallmark AGS advanced seminar, speaker series, co-curricular active learning experiences, research opportunities, and extensive alumni network.



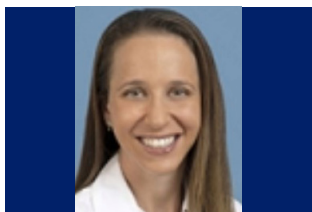
Catie Meyer '90 earned a bachelor's degree from Duke University in political science and art history and a J.D. from Georgetown University Law Center. Before retiring to raise her two children, she was a litigator specializing in white-collar crime and securities litigation. She currently serves on the board of St. Stephen's & St. Agnes School and co-chaired the school's largest capital campaign. She is a member of the board of The Child and Family Network Center, which provides free preschool and family support services to the working poor, and also served on their capital campaign committee. Catie started a local boys youth lacrosse club, the Red Shirts. She served on the Duke Annual Fund Advisory Board (2012-2018) and co-chaired her 15th and 25th reunions. She lives in Alexandria, Virginia, with her daughter, son and two dogs.



Shannon Norris '93, M.D.'97 earned a B.S. in mathematics from Duke and her M.D. from Duke School of Medicine. She completed an internship at Mayo Clinic before starting her diagnostic radiology residency and breast imaging fellowship at Emory University Medical Centers in Atlanta. After becoming board certified by the American Board of Radiology, Shannon joined Northside Radiology Associates in 2003 to specialize in breast imaging, including breast MRI, biopsies, and 3-D tomosynthesis mammography. She is currently vice-chair of the breast section and head of the breast center at Northside Hospital's Alpharetta campus.

Shannon is passionate about providing exceptional breast cancer care and reducing disparities in treatment and diagnosis. She makes frequent medical mission trips to Haiti and Palestine and is active in the National Charity League, a multi-generational philanthropic organization of mothers and daughters donating close to three million hours annually to over 6,000 U.S. charities; she currently serves as the group's liaison to local first responders.

Shannon has been an active Duke volunteer, serving as co-chair of the Class of 1993's 30th reunion, as well as several of her medical school class reunions, most recently the 25th. She is currently on the Duke Atlanta Regional Leadership board and is an alumni interviewer for the Alumni Admissions Advisory Committee. In recognition of her service to the university, she was awarded a 2023 Forever Duke Award. When not at work, she enjoys traveling with her husband and daughters Grayson and Ellis, boating, or reading a bestseller, with horror being her favorite genre.



Dr. Stacy Pineles B.S.E.'00 is an associate professor of ophthalmology and serves as residency program director at the Stein Eye Institute, David Geffen School of Medicine at the University of California, Los Angeles (UCLA). Pineles completed her medical school training at the University of Pennsylvania in 2004, followed by subsequent training as an ophthalmology resident (2005-08) and fellow in pediatric ophthalmology and adult strabismus at the Stein Eye Institute at the University of Pennsylvania (2010), and earned a master's degree in clinical investigation at UCLA (2013).

In 2010, Pineles joined the faculty of the Stein Eye Institute at UCLA, one of the leading centers of vision science in the world. She currently runs an NIH-sponsored research program evaluating binocular vision in children and adults with eye misalignment. Her research interests also include the systemic effects of pediatric eye disease as well as clinical trials in pediatric ophthalmology. She currently serves as the principal investigator of an NIH-sponsored multicenter study of pediatric optic neuritis.

Pineles serves on numerous professional committees within the American Academy of Ophthalmology, American Association of Pediatric Ophthalmology and Strabismus, and the North American Neuro-Ophthalmology Society. She travels nationally and internationally to speak on topics related to her research in pediatric neuro-ophthalmology and is the author of more than 70 peer-reviewed publications and five book chapters. She is active in support of Planned Parenthood Los Angeles and charities supporting human rights, and is a member of the Pratt School of Engineering Board of Visitors. Pineles lives in Santa Monica with her husband, **David Bolno '00**, and her two children, Eva and Ayla.



Tanya Smith '94, J.D.'98, P'26 graduated from Duke with a bachelor of arts in history and subsequently earned a J.D. in 1998. She began her career in the New York City office of Paul, Weiss, Rifkind, Wharton & Garrison where she specialized in securities, private equity and hedge funds. After several years in private practice, she joined JohnA. Levin & Company,

a money manager, as assistant general counsel. After retiring from the legal practice, she focused her efforts on volunteering with various community organizations, including New York City Ballet (business and professional committee), Planned Parenthood of Southern New England, Mount Sinai Children's Environmental Health Center, and Kids in Crisis, where she is currently a member of the board of directors and chair of its nominating committee. For Duke, Tanya worked as a phone-a-thon volunteer for the Annual Fund during her undergraduate years and has been a co-chair of her undergraduate and law school reunions every year since graduating. She is a founding member of the Duke Young Alumni Development Council and has served on the Law Alumni Association board of directors and the Annual Fund executive committee (now the Annual Fund Advisory Board). She currently serves on the Duke Law NY board and the Duke NY Women's Forum Executive Committee.

She lives in Greenwich, Connecticut with her husband **Geoff Smith '94, P'26**. Their daughter Madeline is a member of the Class of '26.



Donna Claycomb Sokol M.Div. '00 is the pastor of Mount Vernon Place United Methodist Church in downtown Washington, DC. Since Donna's appointment to the congregation in July of 2005, the congregation has transitioned from an elderly congregation in decline to a growing congregation composed of many young adults who are seeking to make a vital difference in the heart of the nation's capital. Donna earned her undergraduate degree in economics from William Woods University, her Master of Divinity degree from Duke Divinity School, and her Doctor of Ministry degree from Wesley

Theological Seminary. She also holds an Executive Certificate in Religious Fundraising from the Lilly Family School of Philanthropy at Indiana University. Prior to responding to her call to ministry, Donna served as a White House intern and then spent three years on Capitol Hill, serving on the staffs of a U.S. Congressman and U.S. Senator. She served as the Director of Admissions at Duke Divinity School from 2001-2005. She is the co-author of *A New Day in the City* (Abingdon, 2017). Donna serves as a member of the Duke Divinity School Board of Visitors and regularly speaks about leading change and congregational renewal.



Cynthia Fox Sulzberger '86 P'23, P'25 graduated from Duke with a degree in psychology. She went on to get a masters degree in Reading Specialization from Bank Street College of Education and has worked with struggling readers for the past 33 years. While living in New York City Cynthia was on the board of the Fresh Air Fund, the Junior Council of the Metropolitan Museum of Art, and the Children's Museum of the East End.

In 2008, Cynthia and her family moved to Palm Beach, Florida. She is secretary of the board of the Ann Norton Sculpture Museum, and serves as the Chair of the Education Committee. Cynthia has also served on the board of the Damon Runyon Cancer Research Foundation since 2010. In 2016, she became a Guardian Ad Litem in Palm Beach County, and works as an advocate for children in the foster care system.

Cynthia has remained an active member of the Duke community. She served on the Trinity Board of Visitors, the Sanford Board of Visitors, and has hosted several alumni and parent gatherings at her home in Sag Harbor, NY.

Cynthia is an owner of Vestrum America. She is married to **Steven Green '86**. They have a son, **Dylan '23** and a daughter, **Miranda '25**.



Dr. Susan Walley '96, P'25 is a pediatric hospitalist and division chief of hospital medicine at Children's National Hospital in Washington, D.C., and professor of pediatrics at George Washington University. After she completed her undergraduate degree at Duke University, she attended the Medical College of Georgia for medical school. She completed her pediatric residency training at the University of Alabama at Birmingham until 2021 and remained as faculty until 2021. She is completing a Masters in Health Care Management at Harvard in 2022. She is a nationally recognized expert in the prevention and treatment of youth tobacco use and is a certified tobacco treatment specialist. She has been featured on PBS, CBS, and Sirius XM Doctor Radio as a medical expert on e-cigarettes and tobacco related health issues. She lives in Bethesda, Maryland, with her husband Ryan, who is also a pediatrician and their three sons **Tyler '25**, Harrison, and Anderson.



Kelly Braddy van Winkle '99 graduated from Duke University in 1999, having earned a Bachelor of Arts in Comparative Area Studies-Latin America and Western Europe, with a minor in Spanish. She later obtained her Master of Business Administration from the University of Texas at Dallas in 2003.

In 2011, after owning and operating an industrial tool supply company for seven years, Kelly joined the family business, King of Texas Roofing Company, LP. As the third generation of her family working in commercial construction, she currently serves as President and CEO of King of Texas Construction Company, Inc. (the general partner to the LP.)

Kelly is also a co-founder of the newly formed Meta Team, LLC. Meta is the first and only national, women-owned commercial roofing company in the United States. They are a collaboration of regional, women-owned roofing companies that provide over 230 years of combined experience in the roofing industry.

As entrepreneurs, the Braddy family has traditionally emphasized the importance of giving back to the construction industry, charitable organizations, arts associations and the Duke community. The Braddys were honored with the opportunity of being one of the original families involved with the original construction of the Nasher Museum of Art at Duke University. Kelly is also a former member of the Nasher Friends Board and continues to support the Duke Catholic Center. Additionally, she enjoys mentoring undergraduates participating in the I&E (Innovation & Entrepreneurship) Program.

Kelly exemplifies her love for industry, community, and humanity through many various platforms. In recent years, she served as a Vice Chairman on the Executive Committee of the National Roofing Contractors Association. She previously held a seat on the Association's Board of Directors and is a former President of the National Roofing Legal Resource Center (NRLRC). While Professional Development and Educational Chair for the National Association of Women in Construction in Dallas (NAWIC), Kelly organized educational and leadership opportunities for women. She also remains dedicated to her work as the President of The Roofing Alliance, the philanthropic and foundation arm of the national roofing industry and the National Roofing Contractors Association.

In 2020, she was accepted into the Young Presidents' Organization (YPO), a global peer-to-peer learning and networking organization.

Kelly has been invited several times to speak around the country, sharing her expertise on female leadership opportunities in male-dominated industries.

In her spare time, as a sustaining member of the Junior League of Dallas, she joins with agencies in North Texas fighting domestic violence, child abuse, and cruelty against animals.

Kelly and her husband, Lance, currently reside in Dallas and enjoy spending time at their family home in Jackson Hole, Wyoming.