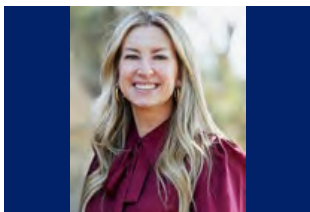


DukeWIN 2024-2025 WIN Leadership Council

The Duke WIN Leadership Council consists of alumnae leaders and donors who serve as WIN advocates and ambassadors. Council members work closely with the WIN Director and the wider alumnae network to increase the number of women shaping Duke's future through their philanthropic influence, strengthen the pipeline of women for service on Duke's volunteer leadership boards, and enhance the way Duke cultivates and engages women for volunteer and financial leadership at the highest levels.

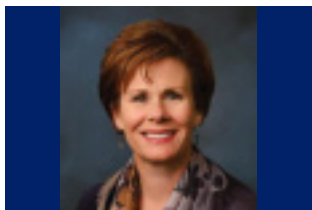


Lydia Lyman Bergman '02, graduated from Duke with an B.A. in Public Policy and minors in French and Art History. She earned a J.D. from UCLA School of Law in 2005. After graduation, she was offered and accepted a clerkship with the Honorable Judge Rea for the Central District of California. Shortly thereafter, she accepted a position at the law firm of Paul, Hastings LLP in Los Angeles, where she specialized in litigation. From there, she moved to Steptoe & Johnson LLP, where she specialized in trademark prosecution.

Lydia is an active community volunteer. She is a member of the board of trustees of the San Francisco Ballet and currently co-chairs its nominating committee. She has been a past marketing committee chair. Before joining the board of trustees, she was a member of the San Francisco Ballet Auxiliary and served as the gala dinner chair, among other positions. Lydia has served on the Village School Development Committee for four years, was the gala chair this past year, and has been actively involved in other committees for Village and Brentwood Schools, where her children go to school. Lydia is a committee member of the Westside Guild, Beauty Bus, and the Organization for Social Media Safety.

Lydia was on the Duke Performances Advisory Board and co-chaired the Class of 2002's 10th, 15th, and 20th reunions. She was also a member of the Duke Young Alumni Development Council, starting in 2007.

Lydia and her husband, Steven Bergman, live in Los Angeles, CA, with their three children, Eloise, Carter, and Spencer, and their two Golden Retrievers. In her spare time, Lydia loves to dance, play pickleball, and take Pilates.



Sara Ayres Craig '94, P'25 graduated from Duke with an A.B. in history and then earned an M.S. in Management from Purdue University in 1996. After graduation, Sara joined her family's auto dealership in Fort Wayne, Indiana, and completed NADA Academy, a yearlong program that teaches dealership management. Today, Sara owns and operates Don Ayres Honda and Don Ayres Acura and has 160 employees.

During her career in her hometown, she has volunteered and held leadership positions in various organizations, including the Jorgensen YMCA, Leadership Forum, the Fort Wayne-Allen County Economic Development Alliance, the Fort Wayne New Car Dealers Association, and the Northeast Indiana Regional Partnership. In 2004, Sara made the inaugural list of the Fort Wayne Business Journal's Future 40. She was named a Northeast Indiana Influential Woman in 2020.

She is a member of the Board of Trustees of Canterbury School and sits on the Finance Committee there. Recently, she co-chaired the school's five-year strategic plan. She is an alumni representative on the Duke Lutherans Committee.

Sara enjoys lake and beach time with family and loves cheering on the Blue Devils in Cameron Indoor Stadium. A mother of three teenagers, she can often be found in the bleachers or sitting in an auditorium watching them play and perform. She lives in Fort Wayne, Indiana, with her husband, Mike Craig, and children, **Kristina Urberg '25**, Elizabeth Craig, Christian Urberg, and Alana Craig.



Shelley Lambert Carter '00 graduated from Duke magna cum laude with a major in public policy studies and then earned a J.D. from Georgetown University School of Law in 2003. After representing clients in the areas of employment and commercial law, Shelley served as a permanent law clerk for Judge Terence C. Kern in the United States District Court for the Northern District of Oklahoma. While in this role, Shelley was also active in various community endeavors, volunteering as a Big Sister through the Big Brothers Big Sisters program, tutoring elementary students in conjunction with Reading Partners, and serving on the board of trustees for Gilcrease Museum and Holland Hall Preparatory School.

In 2012, Shelley became the Executive Director of the Judith and Jean Pape Adams Charitable Foundation, a nonprofit foundation based in Tulsa, Oklahoma. In this position, Shelley leads the foundation to maximize the impact of grantmaking in the areas of social services, education, arts and humanities, and medical research.

Shelley and her husband, **Cason '00**, currently live in Hinsdale, Illinois, with their three boys, Luke, Henry, and Jake, and their dog, Duke. They serve as a host family for Safe Families for Children of Greater Chicago, cheer for the Cubs almost as fervently as the Blue Devils, and spend most of their spare time driving their boys to sports games and cheering them on from the sidelines.



Shari Eberts '90 is a hearing health advocate and internationally recognized author and speaker on hearing loss issues. She is the founder of [LivingWithHearingLoss.com](https://www.livingwithhearingloss.com), a popular blog and online community for people living with hearing loss and tinnitus and executive producer of "[We Hear You](#)," a groundbreaking one-hour documentary about the hearing loss experience. Her first book, [Hear & Beyond: Live Skillfully With Hearing Loss](#), was published in May 2022.

Shari has adult-onset genetic hearing loss and serves on the board of directors of [Hearing Loss Association of America](#). Prior to her advocacy work, Shari had a 20-year career in finance. Shari holds a B.S. in Psychology summa cum laude from Duke University and an M.B.A. from Harvard Business School. Shari served on the Duke Trinity Board of Visitors from 2013-2019. She lives in New York City with her husband and children.



Dorlisa King Flur '87, M.B.A. '88 is an independent board member and corporate adviser to consumer/retail companies. Her prior professional experience divided equally between consulting at McKinsey & Company, where she was a partner in Atlanta and later co-led its Charlotte office, and C-level operating roles in three multibillion-dollar retailers. Notable roles included Chief Merchant and Vice Chair & CAO (Family Dollar), EVP-Omnichannel (Belk), and Chief Strategy & Transformation Officer (Southeastern Grocers).

She currently serves on the boards of two publicly traded retailers: Hibbett Sports, an athletically inspired fashion retailer, and Sally Beauty Holdings, an international specialty retailer and distributor of professional beauty supplies. She also serves as an independent board member for privately owned United States Cold Storage, a refrigerated warehousing and logistics provider, and as senior advisor to Southeastern Grocers.

Dorlisa is an arts enthusiast and active civic leader in Charlotte, where she has chaired Blumenthal Performing Arts and the Bechtler Museum of Modern Art boards. She is chair of the NACD (National Association of Corporate Directors) Carolinas Board and past chair of advisors at UNC-Charlotte's Belk College of Business.

Dorlisa graduated summa cum laude and Phi Beta Kappa in a combined five-year program, earning her B.S. in computer science and economics from Duke and M.B.A. from The Fuqua School of Business. She and her husband, **Peter Flur B.S.E.'86**, have engaged with Duke through their Deux Flur scholarship and the Iron Dukes. They live in Charlotte, and their daughter is a recent graduate of Northwestern University.



Sue M. Gregory BSE'87, P'18 was an Executive Director in the Office of General Counsel at Merck & Co., Inc. Sue joined Merck in 1993 and spent more than 20 years in a number of positions of increasing responsibility at Merck focused largely on compliance with the Federal Food, Drug & Cosmetics Act. Sue oversaw a group of lawyers who provided legal advice to the research division on issues relating to clinical studies, marketing authorizations, post-market safety surveillance, compliance, and labeling. The group also provided legal advice to the US and global commercial divisions on issues such as advertising and promotion, training, and compliance. Sue was also an active participant in Merck's corporate pro bono practice.

Prior to joining Merck, she practiced law at Morgan, Lewis & Bockius in Washington, DC. Sue received her JD degree from Georgetown University School of Law and BSE in Civil Engineering from Duke University. She previously served on the Pratt School of Engineering Board of Visitors.



Anne Harper J.D. '91, LL.M. '91, P'25, P'25, P'27 is a producer of State of the Bay, a live radio program on NPR-affiliate KALW in San Francisco (91.7 FM). Prior to producing public radio, she practiced law for many years, most recently as a litigator with the nonprofit environmental law firm Earthjustice, where she specialized in the enforcement of the Clean Air Act.

Anne currently serves on the Alumnae Leadership Council of Duke University School of Law, the board of trustees of The Bay School of San Francisco, and the board of directors of the League to Save Lake Tahoe (aka Keep Tahoe Blue). She has also served as a mentor for former Vice President Al Gore's Climate Reality Leadership Corps and on the Children's Health Council for UCSF Benioff Children's Hospital. Anne has a B.A. in international relations from Colgate University, a J.D. and LL.M. in comparative and international law from Duke University, and a master's degree in nonprofit administration from the University of San Francisco. She lives in Mill Valley, California, with her husband, Rick Ronald, and their three children.



Stephanie Hawley Henry '96 graduated from Duke with a B.A. in political science and art history. After graduation Stephanie built a career in educational fundraising working in development for Duke, the University of Chicago, and Northwestern University, in addition to the Madeira School in McLean, Va. While working in the Duke Annual Fund, Stephanie developed and launched the first Young Alumni Development Councils and directed the Duke Parents' Program. At Northwestern, she served as senior strategist for principal gifts, and senior director of annual giving and donor relations.

Stephanie is an active community volunteer. She is a member of the board of trustees of North Shore Country Day School and chairs its development committee. She was a member of the Vail Mountain School advancement and endowment committees, and

cochaired the VMS Gala. She also serves on the Woman's Board of Rush University Medical Center. Stephanie was on the Duke Annual Fund Advisory Board from 2016-22 and cochaired the Class of 1996's 10th, 15th, 20th, and 25th Reunions.

Stephanie and her husband, **Jake Henry B.S.E.'96, Ph.D.'99**, live in Winnetka, Ill., and Vail, Colo., with their three girls, Kate, Isabelle, and Georgie, and their Bernese mountain dogs. In her spare time, Stephanie is an avid skier, open-water swimmer, and pickleball player.



Keisha Edwards Hunt '97, P'26 is the president and CEO of Metas Solutions LLC. Metas is an 8(a) certified, woman-owned small business with headquarters in Atlanta. Metas provides consulting and advisory services to the federal government, primarily the Centers for Disease Control and Prevention. Prior to founding the company, Keisha spent over a decade in public-sector consulting with Booz Allen Hamilton and PricewaterhouseCoopers Public Sector (now Guidehouse). She spent her career directing, evaluating, and administering large-scale and innovative community-based programs to strengthen organizations' ability to advance disease prevention. Keisha has helped establish public/private relationships, built community-based volunteer and advocacy networks, and created integrated communication and engagement strategies to strengthen public health approaches, specifically with the federal government. She holds a B.A. in English from Duke, an M.P.H. in behavioral sciences and health education from the Rollins School of Public Health at Emory University, and is a PMI certified Project Management Professional.



Anjali Kataria '93, P'26 is a serial entrepreneur and executive with two decades of healthcare and enterprise software experience in both the public and private sectors. Mytonomy, an industry cloud solution, is Anjali's third venture-backed company. As CEO and Co-Founder of Mytonomy, Anjali leads a fast-growing enterprise software company that is reshaping the future of patient engagement so that patients can lead healthier, happier lives.

Under her leadership, the company has been named to the Inc. 5000 list of fastest growing companies in the US in 2020 and 2021. Mytonomy's Cloud for Healthcare has been named best-in-class for enterprise content management and digital curation solutions, and the Mytonomy Film Studio she founded in 2018, dedicated to producing broadcast-quality patient education, has received 60+ Digital Health and Telly Awards. Today, Mytonomy has the largest healthcare microlearning library in the industry, consisting of more than 2,000 titles (and counting).

Prior to Mytonomy, Anjali's second venture-backed enterprise software company was acquired by Oracle and where she later served as VP of Product Strategy. Anjali's Federal Government experience started with the Obama Administration when she was one of the first Entrepreneurs in Residence at the FDA. She also served as Senior Technology Advisor in the Office of the CIO to the President at the EOP. During this time, Anjali drove multiple groundbreaking transformations including co-leading the innovation pathway, a new high-speed review process for highly innovative medical devices that could have substantial public impact.

Anjali is a former Springboard Fellow and Echoing Green Fellow and has received numerous awards including Top 40 Under 40 in DC, the FDA Commissioner's Award for Innovation, Top 100 Life Sciences Visionaries, and Silicon Valley's FWEE Trailblazer Award. Anjali received her AB in Public Policy from Duke University as a Benjamin N. Duke merit scholar and her MPP from Harvard Kennedy School. She has guest lectured at Wharton and the University of Maryland Smith School of Business. She enjoys spending time with her family, hiking, reading, musical theater, and screenwriting.



Dr. Jennifer Kherani M.D. '08 received her B.A. in Neuroscience in 2000 from Colgate University, completed her pre-medical post-baccalaureate studies at Columbia University in 2004, and earned her M.D. from Duke University in 2008.

She subsequently completed her residency training in emergency medicine in the combined Cornell/Columbia program at New York-Presbyterian Hospital, where she served as administrative chief resident in her final year.

She currently serves as head of clinical safety at Loxo Oncology, a wholly-owned subsidiary of Eli Lilly and Company. She also serves as medical monitor lead for the Loxo Oncology at Lilly Phase III clinical trial evaluating the safety and efficacy of pirtobrutinib (LOXO-305) compared to investigator's choice covalent BTK inhibitor in patients with relapsed or refractory mantle cell lymphoma (MCL). Jen is a founder of Summus Global, a healthcare advisory company. Previously, she served on the faculty of Weill Cornell Medical School as an attending physician at New York- Presbyterian Hospital and is board certified in emergency medicine. She and her husband **Aftab Kherani '95, M.D. '99** live in Rye, New York, and have two sons.



Jill Levenson '87, P'19, P'22 graduated from Duke with a Bachelor of Arts degree in public policy and received a J.D. from Emory University School of Law. Jill worked in the Atlanta office of the U.S. Securities and Exchange Commission, and during that time she was designated a special assistant United States attorney. Subsequently, she worked for a small boutique law firm focusing on complex civil litigation. Jill has been an active member of the Duke community serving on several committees, including co-chair of her 30th reunion. Currently, she is co-chair of the Duke Atlanta Women's Forum. In addition, Jill is involved in a variety of philanthropic efforts and educational institutions in Atlanta. Jill and her husband, Jeff, have two children **Matthew '19** and **Caroline '22**.



Kristin Bishop MacDermott '90, P'20, P'24, P'27 is a licensed marriage and family therapist with more than a decade of research in resilience. The resilience training curriculum she developed has been validated in four studies with researchers from the Duke Clinical Research Institute, published in peer-reviewed journals, and used by a diverse array of organizations, including Navy SEALs, the LAPD, 20 hospitals across the country, including Duke Health and the National Institutes of Health, the National Guard, the Veterans Administration, nonprofits that support at-risk youth, and schools.

Kristin is presently focused on addressing the mental health crisis our children and young adults are facing by bringing evidence-based resilience training to schools, athletic clubs, camps, and other organizations that want to improve the lives of our young people.

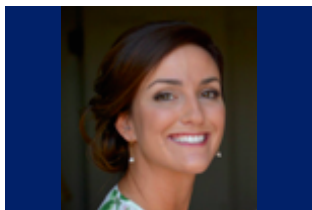
Kristin is the author of three books: "It Takes Two Minutes to Shift Your Mindset and Build Resilience," which breaks resilience down into bite-sized skills anyone can apply to their life immediately; "Resilience: Why Some People Have It, Others Don't, and 47 Skills to Get It"; and "Resilient Family Capital: The 15 Strategies Every Family of Wealth Needs."



Eileen Ergas Meidar '99, P'27 is currently completing graduate work at University College London where her research focuses on motherhood and contemporary parenting culture. Her work examines why elite-educated women have been "opting out" of the workforce at higher rates than women in other populations.

Prior to returning to academia, Eileen was a venture investor, philanthropist and fundraiser focused on social impact, health, and progressive political causes.

Eileen has co-chaired the annual fund at the American School in London and serves as a class representative for annual giving at the Chapin School. She began her career in the impressionist and modern art department at Christie's. Eileen received a bachelor of arts in art history and a certificate in Latin American studies at Duke. She lives in London with her husband, Liad Meidar, and three children.



Kristen Merlone '10 is earned a bachelor of arts in political science with a concentration in American politics and was a member of Pi Beta Phi sorority and the women's lacrosse club. Kristen has been a volunteer assistant soccer coach and afterschool tutor with America SCORES, an organization that inspires urban youth to lead healthy lives, be engaged students, and have the confidence and character to make a difference in the world. Kristen previously interned with the Global Philanthropy Forum and continues to be a project-based consultant at Merlone Geier Partners. More recently, Kristen has focused her attention on, and helped sponsor, the American Grand Strategy (AGS) program at Duke. The mission of AGS is to prepare the next generation of strategists by studying past generations and interacting with current strategic leaders. AGS is a signature program for Duke students interested in national security policymaking. The program is defined by its curriculum, with the hallmark AGS advanced seminar, speaker series, co-curricular active learning experiences, research opportunities, and extensive alumni network.



Tanya Nizialek, BSE'91 currently serves as a manager at the Central Intelligence Agency (CIA). She has been with the Central Intelligence Agency for 22 years and has held a variety of technical and management positions. While completing her BSE at Duke in biomedical and electrical engineering, she participated in the Navy ROTC program and served on active duty in the United States Navy's Civil Engineer Corps for 4 years following graduation. She has graduate degrees from Johns Hopkins University and Salve Regina University. She previously served on the Pratt School of Engineering Board of Visitors. She and her husband, **Jason, T'91**, live in Chantilly, Virginia and have two children, Cameron and Carson.



Shannon Norris '93, M.D.'97 earned a B.S. in mathematics from Duke and her M.D. from Duke School of Medicine. She completed an internship at Mayo Clinic before starting her diagnostic radiology residency and breast imaging fellowship at Emory University Medical Centers in Atlanta. After becoming board certified by the American Board of Radiology, Shannon joined Northside Radiology Associates in 2003 to specialize in breast imaging, including breast MRI, biopsies, and 3-D tomosynthesis mammography. She is currently vice-chair of the breast section and head of the breast center at Northside Hospital's Alharetta campus.

Shannon is passionate about providing exceptional breast cancer care and reducing disparities in treatment and diagnosis. She makes frequent medical mission trips to Haiti and Palestine and is active in the National Charity League, a multi-generational philanthropic organization of mothers and daughters donating close to three million hours annually to over 6,000 U.S. charities; she currently serves as the group's liaison to local first responders.

Shannon has been an active Duke volunteer, serving as co-chair of the Class of 1993's 30th reunion, as well as several of her medical school class reunions, most recently the 25th. She is currently on the Duke Atlanta Regional Leadership board and is an

alumni interviewer for the Alumni Admissions Advisory Committee. In recognition of her service to the university, she was awarded a 2023 Forever Duke Award. When not at work, she enjoys traveling with her husband and daughters Grayson and Ellis, boating, or reading a bestseller, with horror being her favorite genre.



Dr. Stacy Pineles B.S.E.'00 is an associate professor of ophthalmology and serves as residency program director at the Stein Eye Institute, David Geffen School of Medicine at the University of California, Los Angeles (UCLA). Pineles completed her medical school training at the University of Pennsylvania in 2004, followed by subsequent training as an ophthalmology resident (2005-08) and fellow in pediatric ophthalmology and adult strabismus at the Stein Eye Institute at the University of Pennsylvania (2010), and earned a master's degree in clinical investigation at UCLA (2013).

In 2010, Pineles joined the faculty of the Stein Eye Institute at UCLA, one of the leading centers of vision science in the world. She currently runs an NIH-sponsored research program evaluating binocular vision in children and adults with eye misalignment. Her research interests also include the systemic effects of pediatric eye disease as well as clinical trials in pediatric ophthalmology. She currently serves as the principal investigator of an NIH-sponsored multicenter study of pediatric optic neuritis.

Pineles serves on numerous professional committees within the American Academy of Ophthalmology, American Association of Pediatric Ophthalmology and Strabismus, and the North American Neuro-Ophthalmology Society. She travels nationally and internationally to speak on topics related to her research in pediatric neuroophthalmology and is the author of more than 70 peer-reviewed publications and five book chapters. She is active in support of Planned Parenthood Los Angeles and charities supporting human rights, and is a member of the Pratt School of Engineering Board of Visitors. Pineles lives in Santa Monica with her husband, **David Bolno '00**, and her two children, Eva and Ayla.



Amanda Persaud '94 is a partner in the asset management group of Ropes & Gray in New York. Her practice focuses on the formation, fund raising and operation of U.S. and international private investment funds, including private equity funds, real estate funds, hedge funds, credit funds and other alternative asset classes such as special situations, mezzanine/ distressed debt and hybrid funds.

Amanda has led numerous fund raises for prominent U.S. and international sponsors of private investment funds. She regularly advises on a wide range of governance, operational and regulatory matters affecting sponsor clients. She has significant experience advising sponsor clients in structuring and reorganizing private investment funds as well as assisting them with internal compensation and management arrangements.

Amanda's work in asset management M&A includes negotiating and structuring spin-outs of, strategic investments in, and sales of, alternative asset management businesses and regularly providing fund-related advice with respect to portfolio acquisitions and dispositions.

Amanda earned her B.A. in political science from Duke in 1994. She serves on the Board of Directors of the Girl Scouts of Greater New York. She and her husband Christian Struck live in Jersey City, N.J., with their two children.



Tanya Smith '94, J.D.'98, P'26 graduated from Duke with a bachelor of arts in history and subsequently earned a J.D. in 1998. She began her career in the New York City office of Paul, Weiss, Rifkind, Wharton & Garrison where she specialized in securities, private equity and hedge funds. After several years in private practice, she joined JohnA. Levin & Company,

a money manager, as assistant general counsel. After retiring from the legal practice, she focused her efforts on volunteering with various community organizations, including New York City Ballet (business and professional committee), Planned Parenthood of Southern New England, Mount Sinai Children's Environmental Health Center, and Kids in Crisis, where she is currently a member of the board of directors and chair of its nominating committee. For Duke, Tanya worked as a phone-a-thon volunteer for the Annual Fund during her undergraduate years and has been a co-chair of her undergraduate and law school reunions every year since graduating. She is a founding member of the Duke Young Alumni Development Council and has served on the Law Alumni Association board of directors and the Annual Fund executive committee (now the Annual Fund Advisory Board). She currently serves on the Duke Law NY board and the Duke NY Women's Forum Executive Committee.

She lives in Greenwich, Connecticut with her husband **Geoff Smith '94, P'26**. Their daughter Madeline is a member of the Class of '26.



Donna Claycomb Sokol M.Div. '00 is the pastor of Mount Vernon Place United Methodist Church in downtown Washington, DC. Since Donna's appointment to Mount Vernon Place in July of 2005, the congregation has transitioned from an elderly congregation in significant decline to a growing community composed of diverse individuals who are seeking to make a vital difference in the heart of the nation's capital. Donna earned her undergraduate degree in economics from William Woods University, her Master of Divinity degree from Duke Divinity School, and her Doctor of Ministry degree from Wesley Theological Seminary. She holds an Executive Certificate in Religious Fundraising from the Lilly Family School of Philanthropy at Indiana University. Prior to responding to her call to ministry, Donna served as a White House intern and then spent three years on Capitol Hill, serving on the staffs of a U.S.

Congressman and U.S. Senator. Donna was the Director of Admissions at Duke Divinity School from 2001-2005 and is a former Vice-Chair of the Duke Divinity School Board of Visitors. She is the co-author of *A New Day in the City* (Abingdon, 2017).



Cynthia Fox Sulzberger '86 P'23, P'25 graduated from Duke with a degree in psychology. She went on to get a masters degree in Reading Specialization from Bank Street College of Education and has worked with struggling readers for the past 33 years. While living in New York City Cynthia was on the board of the Fresh Air Fund, the Junior Council of the Metropolitan Museum of Art, and the Children's Museum of the East End.

In 2008, Cynthia and her family moved to Palm Beach, Florida. She is secretary of the board of the Ann Norton Sculpture Museum, and serves as the Chair of the Education Committee. Cynthia has also served on the board of the Damon Runyon Cancer Research Foundation since 2010. In 2016, she became a Guardian Ad Litem in Palm Beach County, and works as an advocate for children in the foster care system.

Cynthia has remained an active member of the Duke community. She served on the Trinity Board of Visitors, the Sanford Board of Visitors, and has hosted several alumni and parent gatherings at her home in Sag Harbor, NY.

Cynthia is an owner of Vestrum America. She is married to **Steven Green '86**. They have a son, **Dylan '23** and a daughter, **Miranda '25**.



Dr. Susan Walley '96, P'25 is a pediatric hospitalist and division chief of hospital medicine at Children's National Hospital in Washington, D.C., and professor of pediatrics at George Washington University. After she completed her undergraduate degree at Duke University, she attended the Medical College of Georgia for medical school. She completed her pediatric residency training at the University of Alabama at Birmingham until 2021 and remained as faculty until 2021. She has completed a Masters in Health Care Management at Harvard in 2022. She is a nationally recognized expert in the prevention and treatment of youth tobacco use and is a certified tobacco treatment specialist. She has been featured on PBS, CBS, and Sirius XM Doctor Radio as a medical expert on e-cigarettes and tobacco related health issues. She lives in Bethesda, Maryland, with her husband Ryan, who is also a pediatrician and their three sons **Tyler '25**, Harrison, and Anderson.



Kelly Braddy van Winkle '99 graduated from Duke University in 1999, having earned a Bachelor of Arts in Comparative Area Studies-Latin America and Western Europe, with a minor in Spanish. She later obtained her Master of Business Administration from the University of Texas at Dallas in 2003.

In 2011, after owning and operating an industrial tool supply company for seven years, Kelly joined the family business, King of Texas Roofing Company, LP. As the third generation of her family working in commercial construction, she currently serves as President and CEO of King of Texas Construction Company, Inc. (the general partner to the LP.)

Kelly is also a co-founder of the newly formed Meta Team, LLC. Meta is the first and only national, women-owned commercial roofing company in the United States. They are a collaboration of regional, women-owned roofing companies that provide over 230 years of combined experience in the roofing industry.

As entrepreneurs, the Braddy family has traditionally emphasized the importance of giving back to the construction industry, charitable organizations, arts associations and the Duke community. The Braddys were honored with the opportunity of being one of the original families involved with the original construction of the Nasher Museum of Art at Duke University. Kelly is also a former member of the Nasher Friends Board and continues to support the Duke Catholic Center. Additionally, she enjoys mentoring undergraduates participating in the I&E (Innovation & Entrepreneurship) Program.

Kelly exemplifies her love for industry, community, and humanity through many various platforms. In recent years, she served as a Vice Chairman on the Executive Committee of the National Roofing Contractors Association. She previously held a seat on the Association's Board of Directors and is a former President of the National Roofing Legal Resource Center (NRLRC). While Professional Development and Educational Chair for the National Association of Women in Construction in Dallas (NAWIC), Kelly organized educational and leadership opportunities for women. She also remains dedicated to her work as the President of The Roofing Alliance, the philanthropic and foundation arm of the national roofing industry and the National Roofing Contractors Association.

In 2020, she was accepted into the Young Presidents' Organization (YPO), a global peer-to-peer learning and networking organization. Kelly has been invited several times to speak around the country, sharing her expertise on female leadership opportunities in male-dominated industries.

In her spare time, as a sustaining member of the Junior League of Dallas, she joins with agencies in North Texas fighting domestic violence, child abuse, and cruelty against animals. Kelly and her husband, Lance, currently reside in Dallas and enjoy spending time at their family home in Jackson Hole, Wyoming.